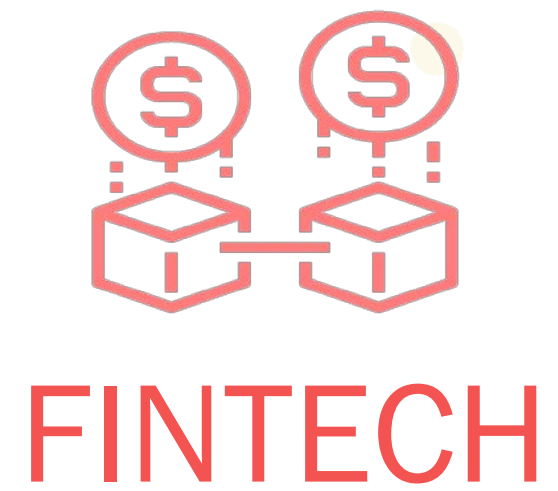


FUTURE SHAPER

FROM VISION TO ACTION

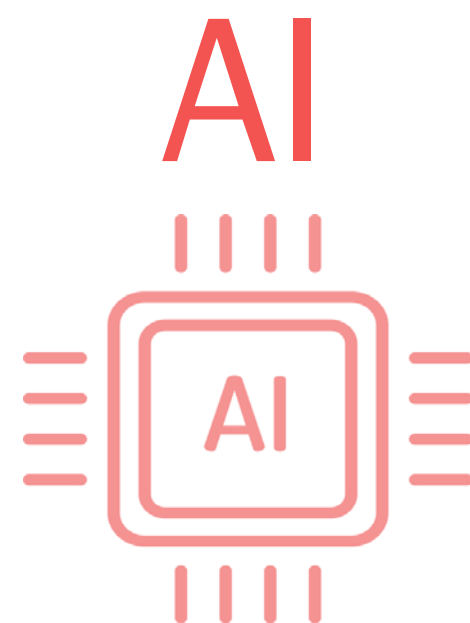




IOT



IMAGINATION



VR

POSSIBILITY

BRIDGE THE GAP

REALITY

HAVE YOU BEEN THINKING OF
TURNING YOUR DREAM INTO REALITY



Hong Kong

SMART CITY RANKING

32

Out of 109

37 in 2019

SMART CITY RATING

BBB

BBB in 2019

FACTOR RATINGS

GROUP

1

All ratings range from AAA to D

BACKGROUND INFORMATION

City

Population
7,314,000

(UN World Cities Report)



Country

	2015	2016	2017	2018	1 yr change
HDI	0.927	0.931	0.937	0.939	+0.002
Life expectancy at Birth	84.0	84.3	84.5	84.7	+0.2
Expected years of schooling	16.3	16.3	16.5	16.5	+0.0
Mean years of schooling	11.9	12.0	12.0	12.0	+0.0
GNI per capita (PPP \$)	54,608	55,816	58,553	60,221	+1,668.0

Health & Safety

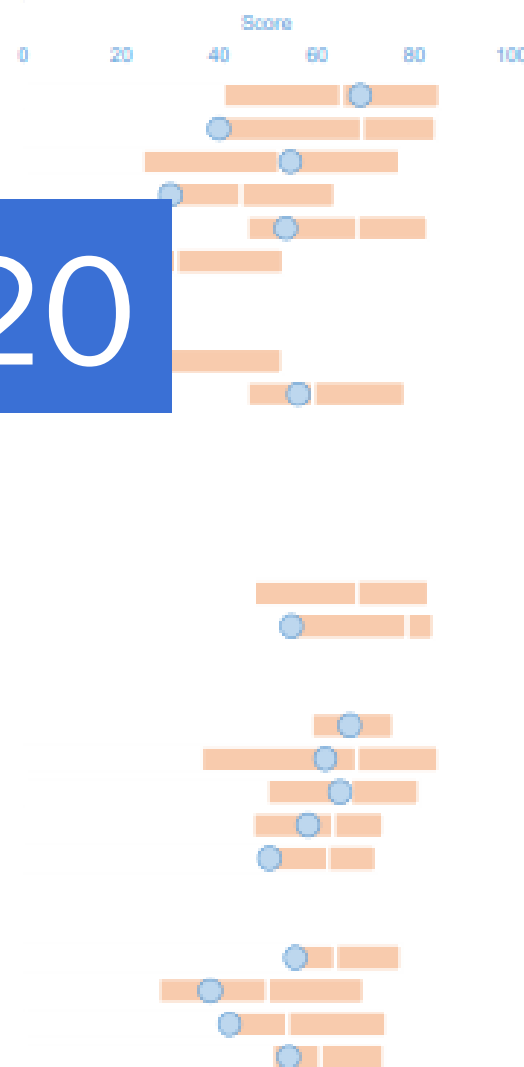
- Basic sanitation meets the needs of the poorest areas
- Recycling services are satisfactory
- Public safety is not a problem
- Air pollution is not a problem

- Employment finding services are readily available
- Most children have access to a good school
- Lifelong learning opportunities are provided by local institutions
- Businesses are creating new jobs
- Minorities feel welcome

Governance

- Information on local government decisions are easily accessible
- Corruption of city officials is not an issue of concern
- Residents contribute to decision making of local government
- Residents provide feedback on local government projects

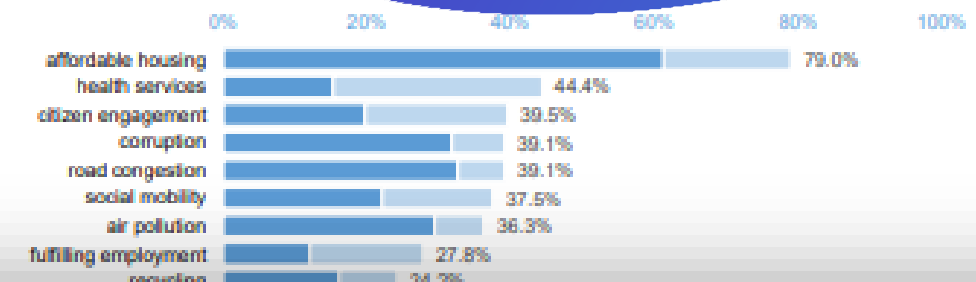
STRUCTURES



PRIORITY AREAS

From a list of 15 indicators, survey respondents were asked to select 5 that they perceived as the most urgent for their city. This is the total bar. The higher the percentage of responses per area, the greater the priority for the city.

The left hand section of each bar shows the Alignment - the proportion of those respondents who also answered the corresponding survey questions low. A strong Alignment implies that these areas also demand priority attention.



ATTITUDES

- You are willing to concede personal data in order to improve city services
- You are comfortable with face recognition technology
- You feel the availability of online information has improved
- The proportion of your day-to-day payments made using digital means (% of transactions)

LEGEND: GROUP MEAN CITY

City	Smart City Rank 2020	Change	Smart City Rating 2020	Smart City Rank 2019	Smart City Rating 2019
Los Angeles	26	▲ (+9)	BBB	35	BBB
San Francisco	27	▼ (-15)	BBB	12	A
The Hague	28	▲ (+1)	BBB	29	BBB
Rotterdam	29	▲ (+7)	BBB	36	BBB
Toronto	30	▼ (-15)	BBB	15	A
Gothenburg	31	▼ (-3)	BBB	28	BBB
Hong Kong	32	▲ (+5)	BBB	37	BBB
Hanover	33	▼ (-7)	BBB	26	BBB

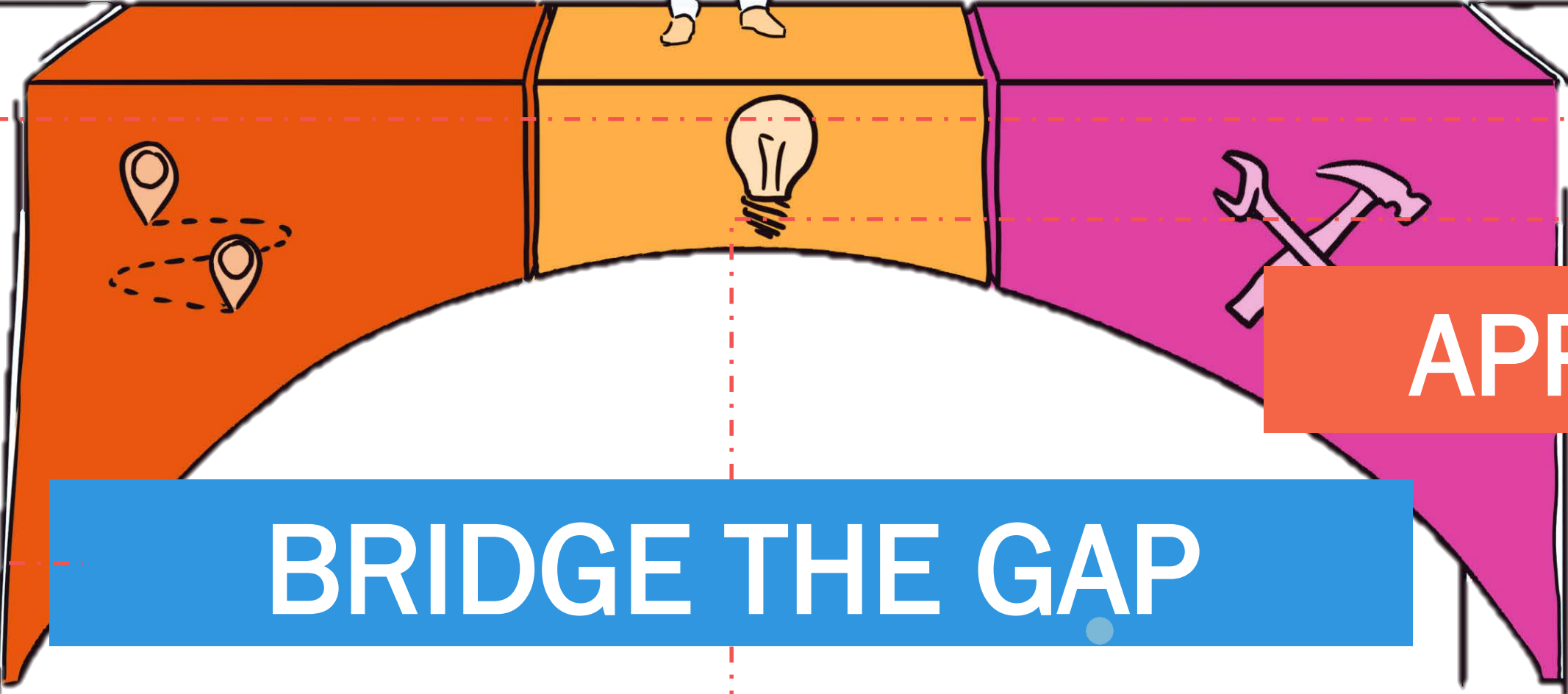
Gothenburg	31	▼ (-3)
Hong Kong	32	▲ (+5)
Hanover	33	▼ (-7)

Phoenix	39	new	BBB		
Birmingham	40	▲ (+12)	BBB	52	BB
Chicago	41	▲ (+12)	BBB	53	BB
Abu Dhabi	42	▲ (+14)	BB	56	B
Dubai	43	▲ (+2)	BB	45	BB
Prague	44	▼ (-25)	BB	19	BBB
Madrid	45	▼ (-24)	BB	21	BBB
Busan	46	▲ (+4)	BB	50	BB
Seoul	47	— (0)	BB	47	BB
Zaragoza	48	▲ (+1)	BB	49	BB
Barcelona	49	▼ (-1)	BB	48	BB
Tel Aviv	50	▼ (-4)	BB	46	BB

SMART CITY INDEX 2020

CONDUCTED BY IMD WORLD COMPETITIVENESS CENTRE

VISION



APPLICATION

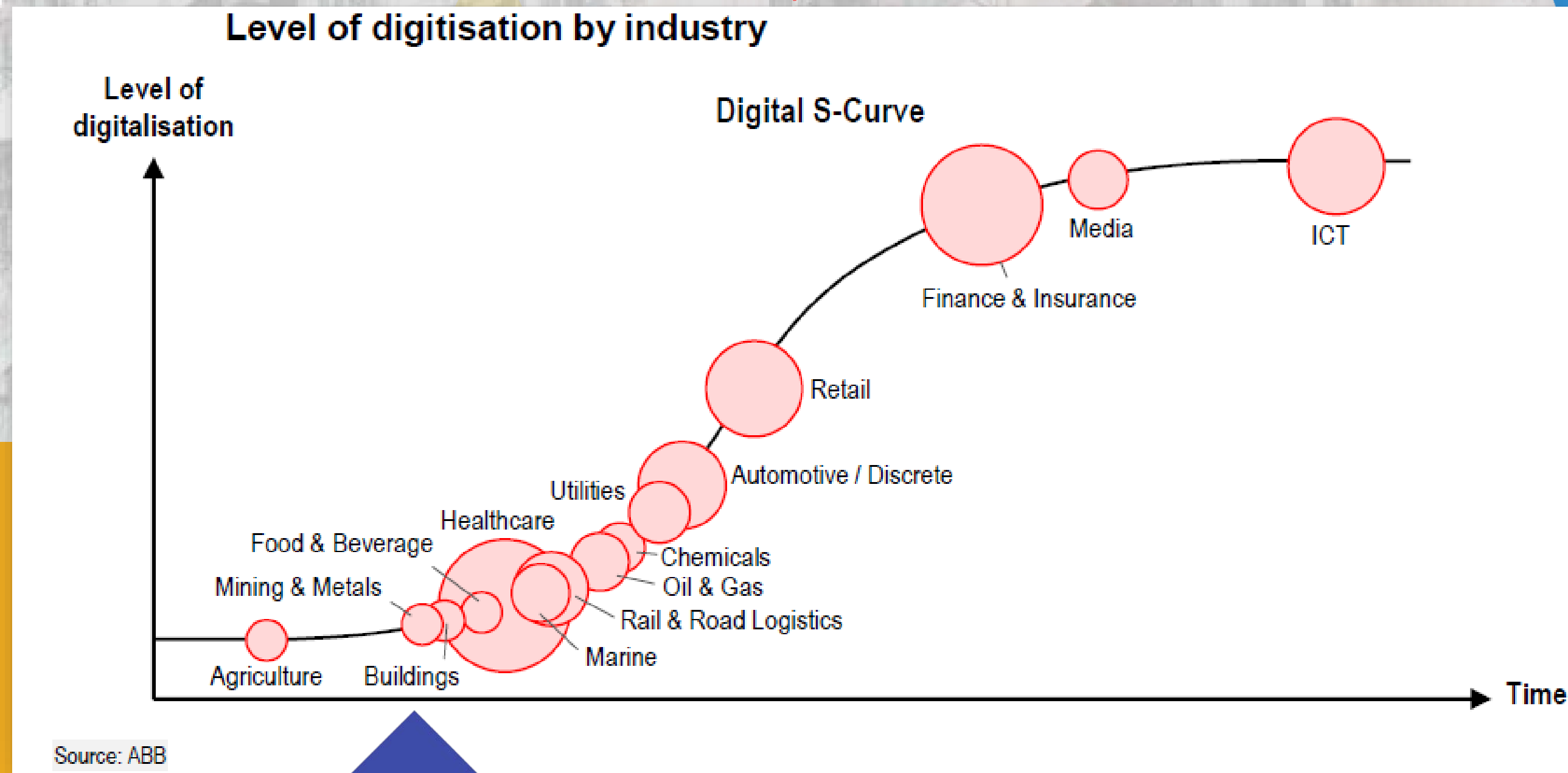
BRIDGE THE GAP



INNOVATION
X
FINANCE

=BUSINESS VALUE

LEVEL OF DIGITIZATION BY INDUSTRY



Source from ABB



Construction Innovation and Technology Fund 建造業創新及科技基金

HKD 1BILLION

WE INNOVATE
WE BUILD
融匯科技 創建香港

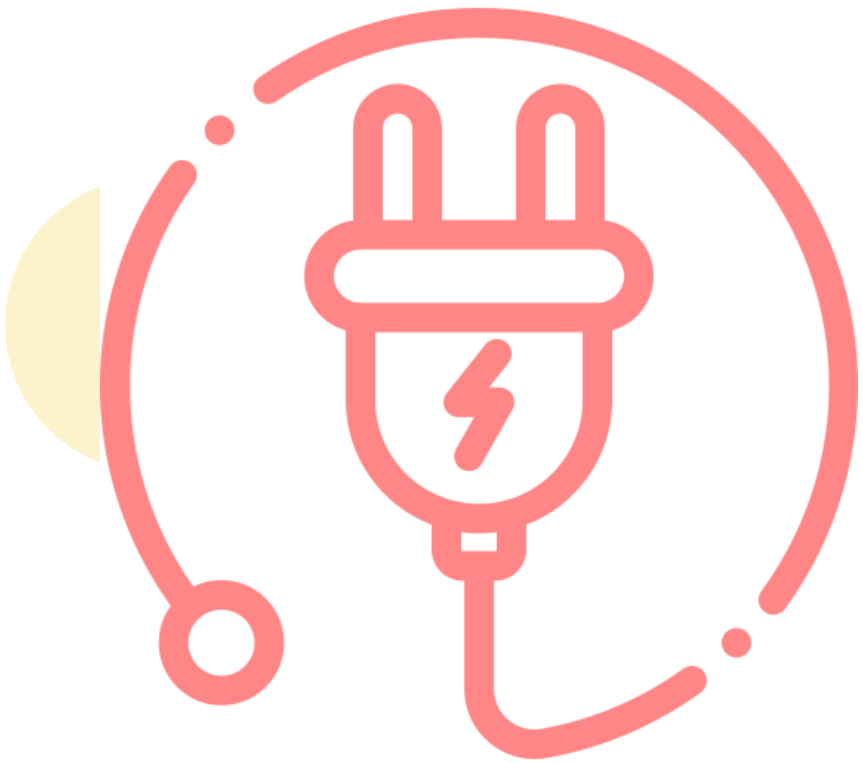


- RESEARCH TALENT HUB (RTH)
- INNOVATION AND TECHNOLOGY SUPPORT PROGRAMME (ITSP)
- MAINLAND-HONG KONG JOINT FUNDING SCHEME (MHKJFS)
- ENTERPRISE SUPPORT SCHEME (ESS)
- INNOVATION AND TECHNOLOGY VENTURE FUND (ITVF)
- REINDUSTRIALISATION AND TECHNOLOGY TRAINING PROGRAMME (RTTP)
- GUANGDONG-HONG KONG TECHNOLOGY COOPERATION FUNDING SCHEME (TCFS)
- RESEARCH AND DEVELOPMENT CASH REBATE SCHEME (CRS)
- GENERAL SUPPORT PROGRAMME (GSP)
- TECHNOLOGY START-UP SUPPORT SCHEME FOR UNIVERSITIES (TSSSU)
- PARTNERSHIP RESEARCH PROGRAMME (PRP)
- MIDSTREAM RESEARCH PROGRAMME FOR UNIVERSITIES (MRP)
- TECHNOLOGY VOUCHER PROGRAMME (TVP)
- STEM INTERNSHIP SCHEME
- RE-INDUSTRIALISATION FUNDING SCHEME (RFS)
- PATENT APPLICATION GRANT (PAG)

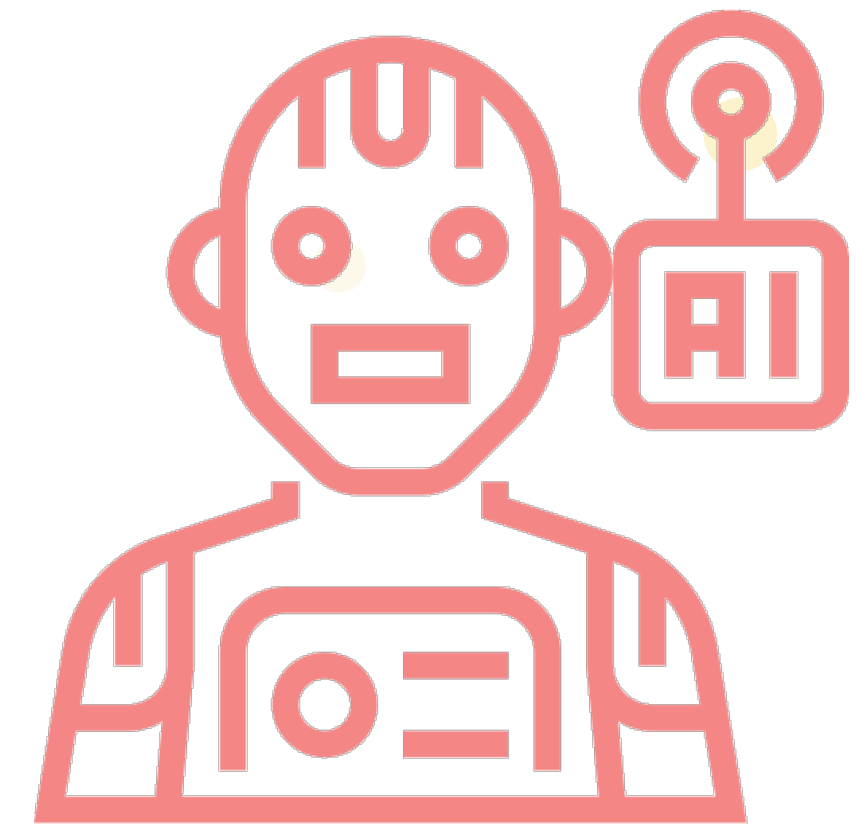
Over **15** AVAILABLE PROGRAMMES
FROM THE GOVERNMENT OF THE HKSAR

PUBLIC SECTOR TRIAL SCHEME
ITF PROJECTS
(PSTS ITF)

ELECTRICAL & MECHANICAL



ARTIFICIAL INTELLIGENCE



ENERGY SAVING + PREVENTIVE MAINTENANCE + FAULT PREDICTION

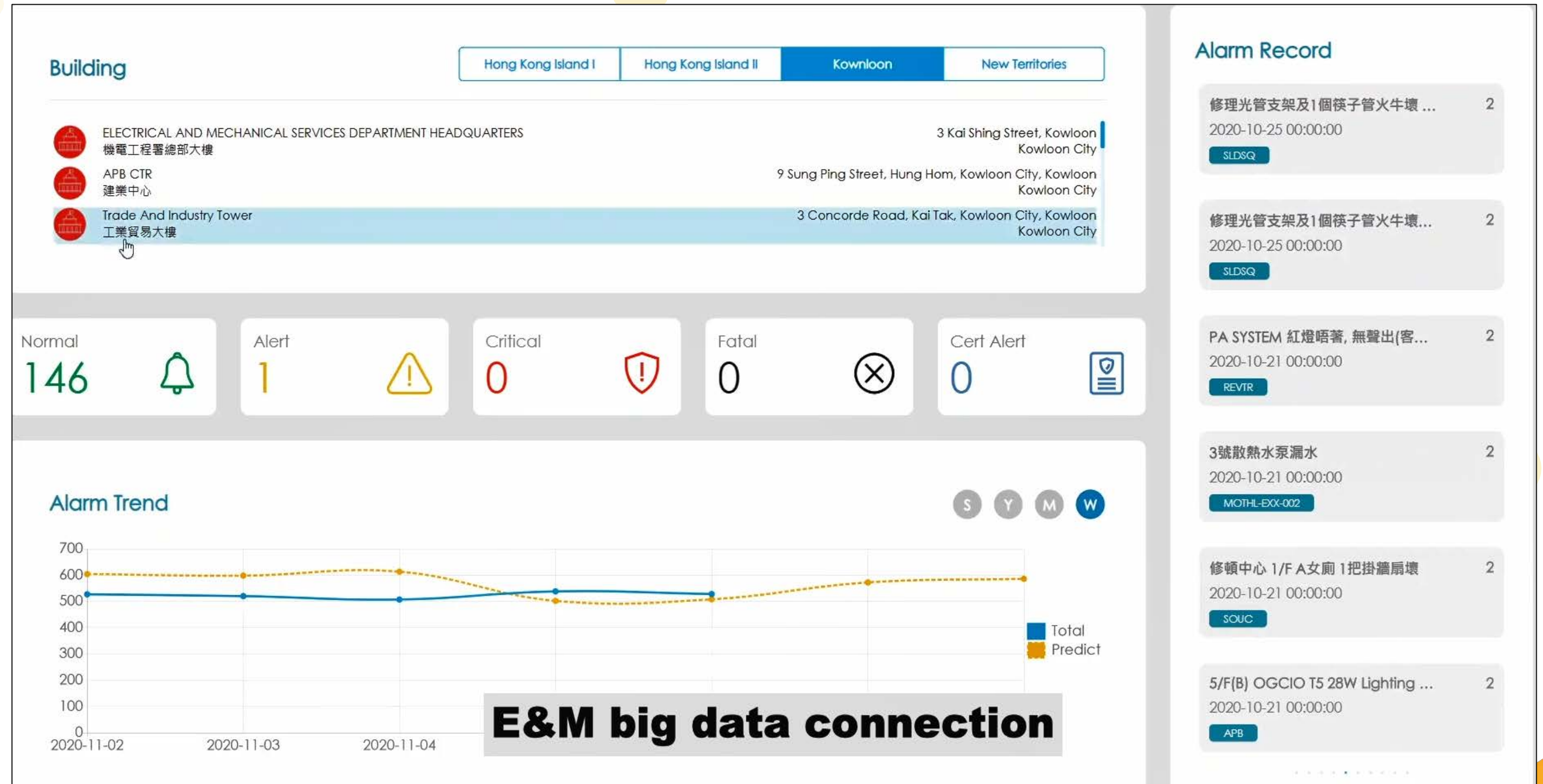


E&M 2.0

A New Journey

Electrical & Mechanical Services Trading Fund
The 2nd 5-year Strategic Plan

REGIONAL DIGITAL CONTROL CENTRE



SMART CITY

BE A
FUTURE SHAPER



CITY RESILIENCE

FACILITATE SUSTAINABILITY & GROWTH

IMPROVE QUALITY OF LIFE

GWIN

GOVERNMENT WIDE
IOT NETWORK

SMART
PARKING

3

SMART PARKING RESERVATION SYSTEM



Internet of
Care
Thing

- Online Carpark Booking
- Real-time Parking Status
- Better parking slot management



GWIN

GOVERNMENT WIDE
IOT NETWORK

SMART TOILET



COLLABORATE
TOGETHER

CONNECTED
SMART
INNOVATED





DREAM

BIG

BRIDGE THE GAP

SHAPE OUR

FUTURE

ENJOY OUR TIME TO BE A

**FUTURE
SHAPER**

THANK YOU